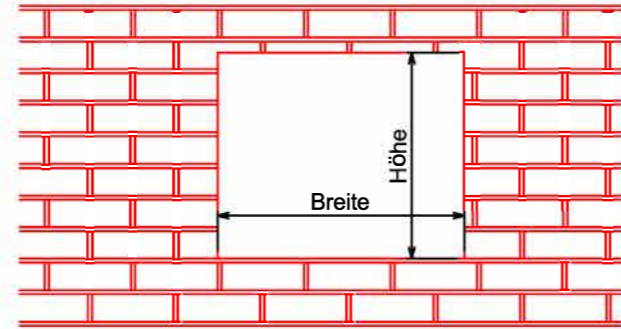


1.

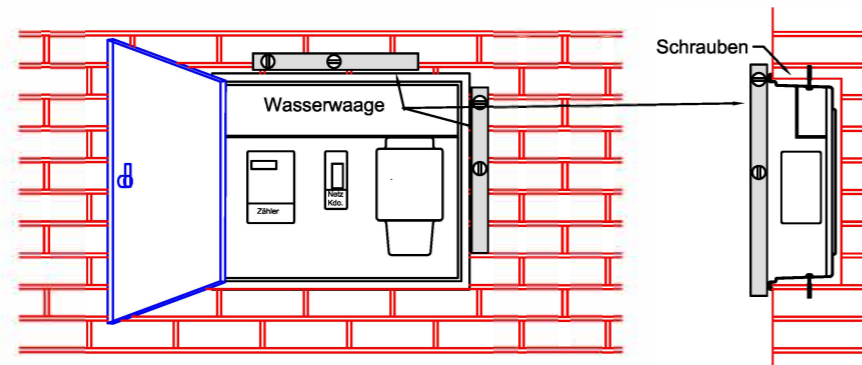
Wall recess as indicated on dimension sheet or catalogue. If the recess is correct, the protruding edge neatly covers the opening. (Important for exposed masonry or exposed concrete).



2.

Fix in place, e.g. with screws and dowels or wooden wedges, etc.

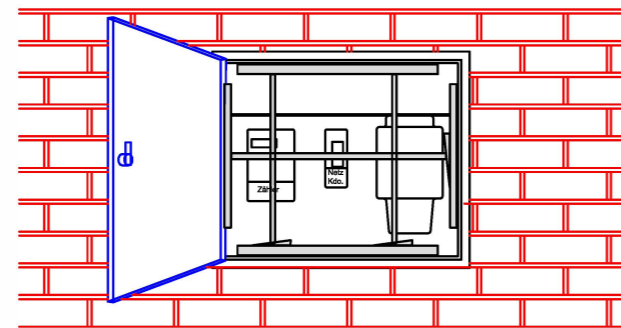
Ensure exact alignment in all positions



3.

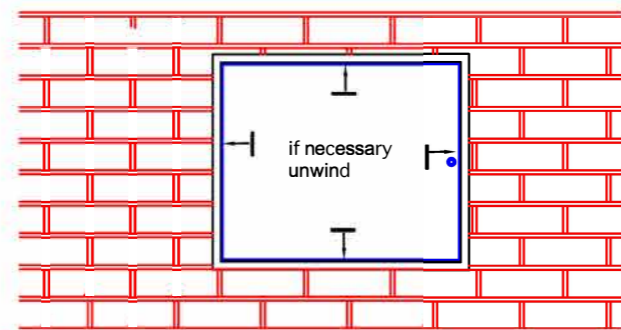
Sprouting with wooden boards and wedges

Check for straightness



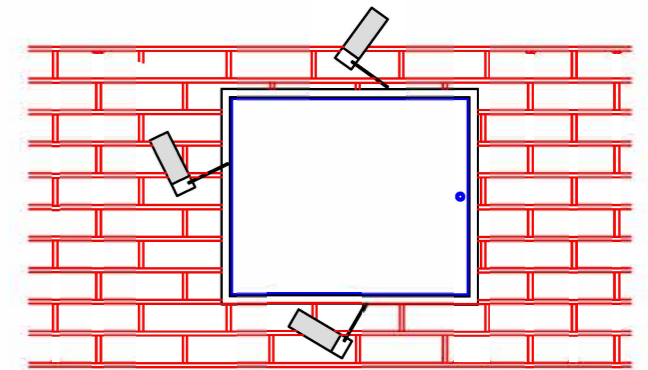
4.

Close the door. Check the air gap all around, if necessary align with wooden wedges.



5.

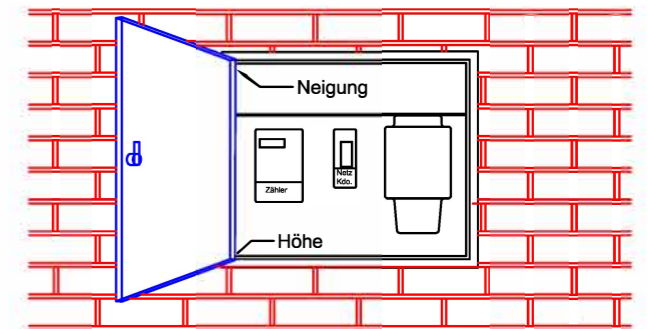
Foam in with assembly foam. Caution, only a little, foams up; or use masonry mortar. When using foam, follow the instructions of the foam supplier.



6.

After curing straighten door
Tilt = hinge up

Height = Adjusting screw below



Assembly instructions for

WEMO meter box

It is essential to observe:

It is essential that the box is unclamped during installation. No liability can be accepted in the event of improper installation!

TT / TV compartment:

When mounting the TT connection box, make sure that its cover is fitted with countersunk hexagonal screws.



aXpel composites AG
5277 Hottwil
062 867 20 60
office.composites@axpel.com
axpel-composites.com

WEMO meter box
aus glasfaserverstärktem Kunststoff
(GRP, Polyester)
electrically and thermally insulating

Signed: R. Wernli

Date: 8.02.05

Installation instructions
02